

# Western Michigan University- Boiler #5 Removal

Active Site Boiler Abatement/Demolition- Kalamazoo, MI

## *Western Michigan University- Beam Power Plant*

The Power Plant building includes (2) 4 mega-watt gas turbines that can provide the entire campus with electricity and steam for heating. The plant was converted from coal-fired steam plant to a combined cycle plant from 1995-97.

This renovation increased operational efficiency, and significantly reduced environmental impact

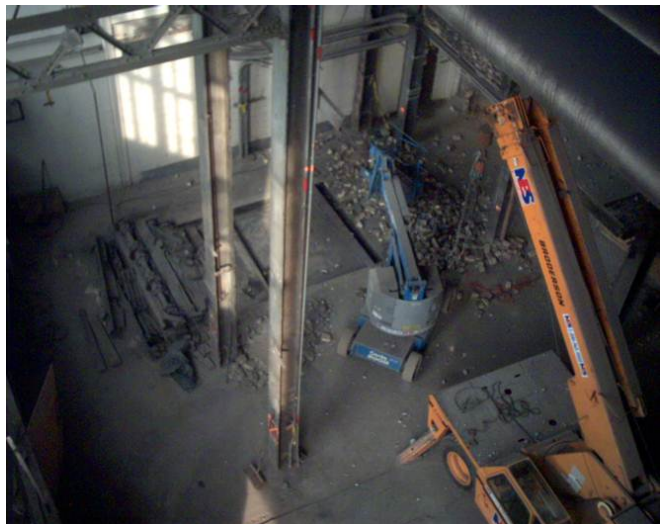
## *General Project Scope*

Homrich was contracted to perform the abatement and demolition of Boiler #5 which was taken out of service back in the middle 1990's.

The plant remained in operation while demolition activities were performed. The area was quarantined and contained in order to eliminate outside exposure to asbestos. Demolition activities were done with specialized procedures in order to not interrupt the ongoing activities of the Power Plant.

This project was completed on schedule, and without incidence.

Homrich was also contracted to remove another boiler back in 1994 when the changeover was taking place.



SELECTIVE DEMOLITION

**HOMRICH**

E 102